



Re-development Project

Architect's Involvement

Fundraising Campaign Committee

Chairman:
Mr. Kenneth Ting, SBS, JP

Vice-Chairman:
Mrs. Doris Ho, JP

Members:
Mrs. Stella Lau, JP
Mrs. Emily Dai
Ms Audrey Au
Mrs. Josephine Chang
Mrs. Sheilah Chatjaval
Mrs. Tammy Fan
Mrs. Daisy Ho
Mrs. Yvette Ho
Mrs. Isabel Huen
Mr. Hardy Lok
Mrs. Ng Saw Kheng, JP
Ms Loretta Pang
Dr. Vivian Taam Wong, JP

Diocesan Girls' School Education Foundation Limited

Chairman:
The Honourable Mr. Justice Bokhary

Members:
Mr. Vincent Cheng, GBS, OBE, JP
Mrs. Annie Lee Liang
Mr. Frederick Ma, GBS, JP
Dr. Vivian Taam Wong, JP

Building Sub-Committee

Hon. Advisor:
Mr. Marco Wu, SBS

Chairman:
Mr. Hardy Lok

Vice-Chairman:
Mrs. Ng Saw Kheng, JP
Mr. M. Y. Wan, BBS, JP

Members:
Mrs. Doris Ho, JP
Mrs. Stella Lau, JP
Mrs. Emily Dai
Mrs. Josephine Chang
Mrs. Sheilah Chatjaval
Mr. Conrad K.K. Fung
Mrs. Winnie Hioe
Mr. David Mong
Ms Jane Ng
Mrs. Susanna Wong

Throughout the years, P&T have had a good association with DGS, having benefited from taking on board many former graduates from DGS under its wings. Indeed, as far back as the early 70s, the first design involvement of P&T, formerly Palmer & Turner, was a design instruction of the primary school.

In the late 90s, P&T were asked to do a full review of the buildings and future potential of the site, which resulted in 2006 in the School's decision to go for complete redevelopment.

In 2008, P&T were commissioned to carry out the design of the school, working closely with the school staff and Board, developed a unique master plan design that satisfied various requirements of DGS.

The Architects of DGS redevelopment project

Nick Burns (2nd from left)
Joel Chan (1st from left)
Aaron Chan (3rd from right)
Kenneth Ng (middle)
Sally Chan (2nd from right)
Hilary Ng (1st from right)
David Yeung (3rd from left)



Master Plan

The architects in their school designs recognised that many of the new facilities such as the Auditorium, Sports Hall and computer rooms, which do not need natural daylight, can be effectively "buried" below the open spaces. Once established, this allowed nearly 50% of the volume of the school to be buried below the sports areas.

The base of the building then became the Auditorium, Assembly Halls, Sports Hall, Carpark and Swimming Pool. From the main entrance plaza at ground level, a variety of open and covered play spaces rise in a series of terraces, all connected by a grand staircase leading up to the main playing fields located above the Auditorium and the Halls, at 14m above ground level.

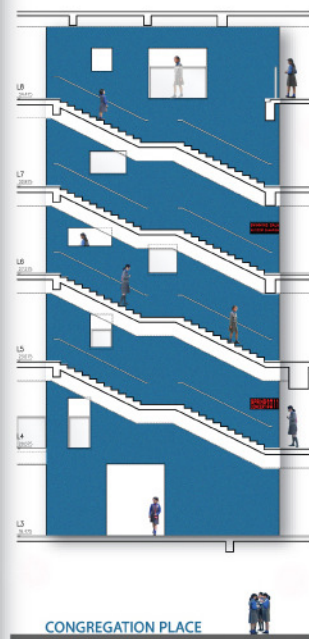


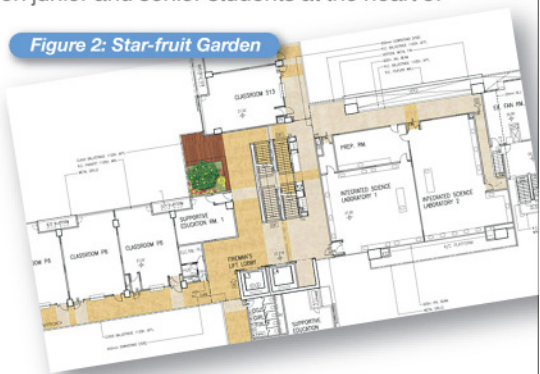
Figure 1: Spiral of Learning

Located above the terraces, the teaching rooms rise a further five storeys in the shape of a cruciform building, one half of which comprises the Junior school, and the other half the Senior School. The cruciform structure provides a center for the school, whilst keeping the bulk of the buildings away from the buildings next door, thus acting as a good neighbour to the surrounding developments. At the eastern end of the site, the Recital Hall, the Chapel and a roof garden are provided.

Acting as the core of the school, the architects have created the "Spiral of Learning". The Spiral (**Figure 1**) consists of two stairs, bringing students from the main plazas to all the facilities above. It allows independent circulation of junior students and senior students without creating a physical barrier between the two schools, thereby signifying the close relationship between junior and senior students at the heart of the campus.

Adjacent to the Spiral at the sixth level, is the Star-Fruit Garden (**Figure 2**), where an Averrhoa Carambola tree was planted, reminding students of the spacious green openness of the old campus.

Figure 2: Star-fruit Garden



Looking at the old and new facilities of the school in more detail:

DGS Plaza

The main entrance of the old campus, shared by students, staff and cars, was once the senior school stage where celebrations and performance were often held (**Figure 3: Photo of school event**). This DGS historical setting, and its associated tradition, has been recreated in the design of the new campus, but this time, removing all vehicular traffic. This DGS Plaza (**Figure 4 – DGS Plaza**) will be a vehicle-free landscaped plaza surrounded by and connected to all the major new facilities, a crucial starting point for any visit to the school. Surrounding the plaza, the corridors and terraces form a good viewing platform for spectators witnessing school events.

At the Gascoigne Road entrance to the junior school, another vehicle-free landscaped entrance courtyard of a different identity was created. This DGJS Courtyard (**Figure 5**) leads to the junior Library building, the Assembly Hall, and the Performing Arts Centre.



Figure 3: Photo of school event



Figure 4: DGS Plaza

Raising another level gives access to the balcony level of the Auditorium, Lecture Hall, the secondary library and the Staff Offices.

From the DGS Plaza level, direct access is provided to the General Office, the Recital Hall, the Chapel, the Swimming Pool, the upper part of the junior library, the Assembly Hall, the Gymnasium and the Auditorium illustrated below. Direct access for public performances is also provided to the Auditorium directly from Jordan Road without passing through the campus. (**Figure 6 - 11**)



Figure 5: DGJS Courtyard



Figure 6: Recital Hall

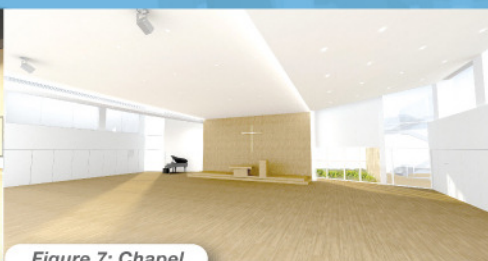


Figure 7: Chapel

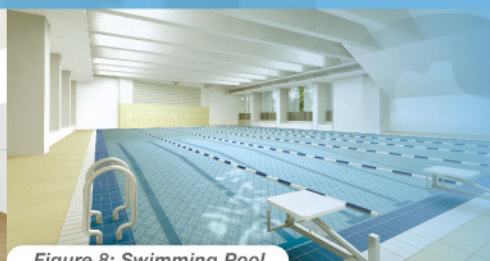


Figure 8: Swimming Pool



Figure 9: Assembly Hall

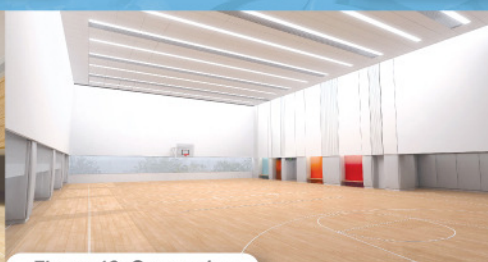


Figure 10: Gymnasium



Figure 11: Auditorium

Continuing up the main staircase will lead to the Field at 14m above ground level (**Figure 12: Sports Field**). Sports is one of the five pillars of DGS education, and the Field is thus at the center of the campus, and is closely connected to the Gymnasium and changing room below. It also provides the largest open space of the campus. At the northern end, there is a middle garden, which is both for recreational use and a meeting point for parents, teachers, and students of the junior school in the morning.

Above the sports field level, connected by the Spiral of Learning, rise the five- storey teaching buildings of the Junior and Senior Schools.

Crowning the school's top are two floors of Guest Houses, provided on ninth and tenth levels.

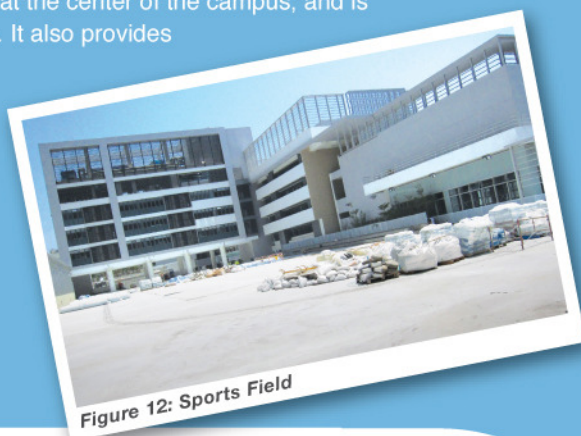


Figure 12: Sports Field

Open Space

The old campus consisted of a series of low rise buildings set within open playing fields as shown on the aerial photograph (**Figure 13: Aerial view of DGS in 2008**). The amount of open space provided in the old campus was 6,300m².

By burying a large volume of facilities and then terracing the open spaces above them, the architects have managed to create four times the usable area, while at the same time increasing the open space to 10,000 m² (**Figure 14: Aerial view of DGS in 2010**).



Figure 13: Aerial photo of DGS in 2008



Figure 14: Aerial photo of DGS in 2010

Tradition and Artifacts

With many years of tradition and history behind DGS, it was essential to retain significant items of the old school, such as the DGS Plaza described above. It was also essential to incorporate and display artifacts that remind the present and future students of the long history and traditions of DGS. Among these are the original trees of the Plaza, granite blocks from the old chapel, the 1959 brass bell, the old metal entrance gate, and the original trees planted by Dr. Symons, all illustrated below. These commemorate the long history of DGS. (**Figures 15 - 17**)

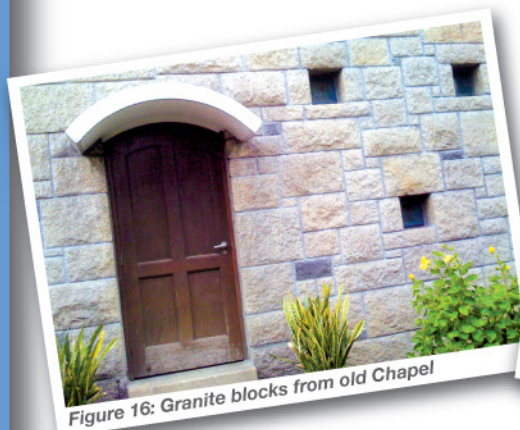


Figure 16: Granite blocks from old Chapel



Figure 15: Eugenia Javanica by the school entrance



Figure 17: 1959 Brass Bell

Overall, the task has been to provide a brand new school incorporating the latest facilities that will serve the staff and students through the 21st Century whilst preserving the traditions and character of DGS over the last 150 years.

Progress report of the School Redevelopment Project

January 2011

Plastering works to external walls of L1 to L4 facing Chi Wo Street completed. Erection of block wall, internal plastering works and installation works for aluminium window and window wall frame up to L8 completed. The first transformer energized on 13th January 2011.

February 2011

The mock up for internal fitting out works and external wall pattern of Auditorium completed and inspected by School on 18th February 2011. 80% of plastering works to walls facing Chi Wo Street completed. Block wall erection completed.

March 2011

70% of external wall tiling works and internal wall plaster were completed. Remaining two transformers energized in early March 2011. Kick-off meeting to discuss the move-in and decanting schedule.

April 2011

95% of external wall tiling and painting works completed. About 60% of scaffolding dismantled. Most of the E&M second fixing works completed.

May 2011

Fire Services Department inspection carried out in May 2011. The Pre-OP inspection carried out in June 2011.

DGS Quest Thank You For Your Unfailing Support

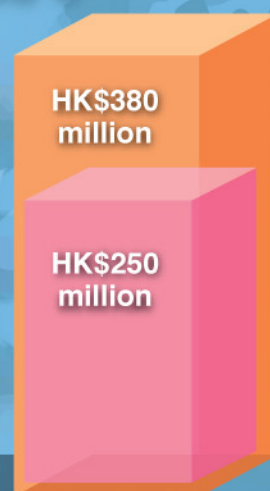


Fundraising Target: **HK\$380 million**



Donations Received: **HK\$250 million**

(as of 15th June 2011)



Enquiries: (852) 2384-5200
Email: development@dgs.edu.hk

Website: www.dgs.edu.hk/development
Contact: Ms Shirley Ping

DGS Campus Map 2011



- | | | | | | |
|---|------------------|-----------|----|----------------------|-----------|
| 1 | Sports Field | (L4) | 10 | DOGA Place | (L1) |
| 2 | Auditorium | (L1 – L3) | 11 | General Office | (L2) |
| 3 | Tennis Court | (L7) | 12 | Swimming Pool | (L1) |
| 4 | Netball Court | (L9) | 13 | Recital Hall | (L2) |
| 5 | Middle Garden | (L5) | 14 | Chapel | (L4) |
| 6 | DGJS Roof Garden | (L9) | 15 | Assembly Hall (DGS) | (L2) |
| 7 | Library (DGJS) | (L1 – L2) | 16 | Assembly Hall (DGJS) | (L1) |
| 8 | Library (DGS) | (L3) | 17 | DGJS Classrooms | (L6 – L8) |
| 9 | DGS Plaza | (L2) | 18 | DGS Classrooms | (L4 – L8) |

Address : 1 Jordan Road,
Kowloon, Hong Kong

DGS Tel : 2384 5205
DGJS Tel : 2388 1781

DGS Website : <http://www.dgs.edu.hk>
DGJS Website : <http://www.dgjs.edu.hk>